

ALTO* Portfolio Design

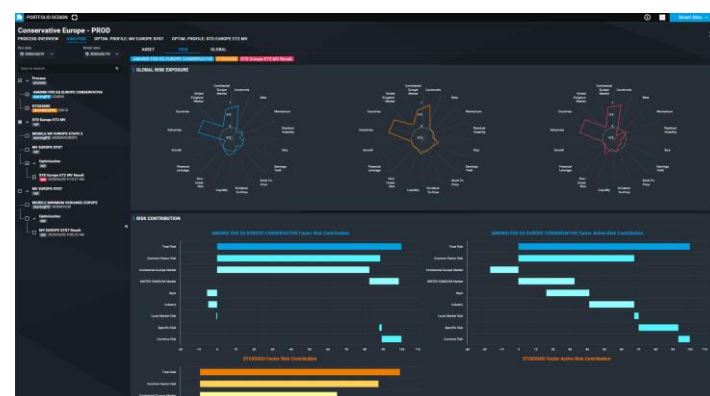
Portfolio construction and optimization: from ideas to implementation

Amundi Services provides asset managers and institutional investors with an **ALTO*** module to manage tailor-made portfolios, and normalize the definition of a portfolio management process. From investment ideas to portfolio implementation, including exposure and performance analysis, constrained optimizations, market scenarios back-testing and ex-ante risk analysis.

The solution offered by Amundi Services is integrated into **ALTO***, its in-house Portfolio Management System (PMS), benefiting from the latest innovations. This platform is improved with a **continuous delivery** organization, and recently a dedicated module for portfolio construction based on optimization has been implemented. **ALTO* Portfolio Design** stands as a Portfolio Construction platform and covers the value chain from **construction**, taking into account customized constraints including ESG data and specific filters, to **portfolio rebalancing** and **trade programming**. The solution allows the client to have a 360° view of its portfolios management process into a single platform and to oversee the risk and performance analytics.

⚙️ Portfolio Design management process as building blocks

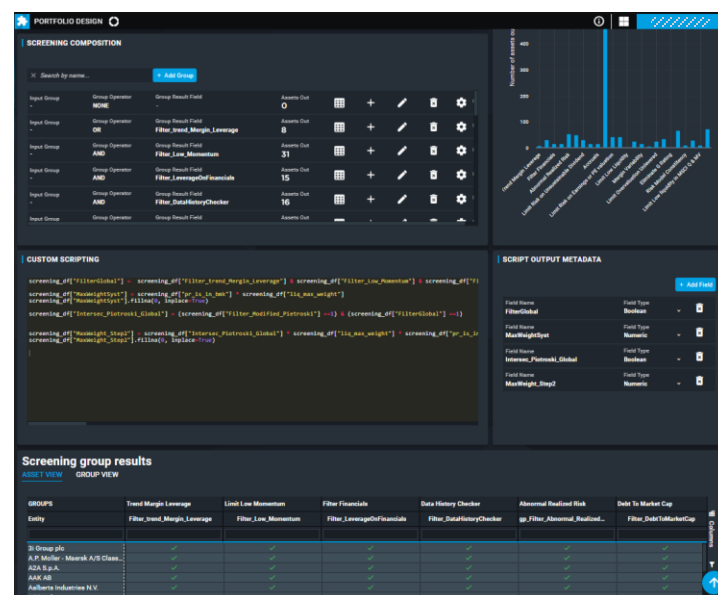
- 1 **Investment Universe** Build an investment universe, with index, portfolios, factors, custom list, etc..
- 2 **Universe scoring and filtering** Screen a universe with simple predefined calculation or complex custom calculations that can be used as filters for the next steps.
- 3 **Portfolio construction** Weigh assets of the screened universe using different methodologies: equal risk contribution, Black-Litterman, factor investing, custom, etc...
- 4 **Portfolio optimization** Perform optimizations using a profile linked to an optimization engine (MSCI Barra risk models)
- 5 **Analysis views** Analyze each portfolio and ideas through customized widgets using risk ex-ante exposure
- 6 **Portfolio implementation** Define your trading plan and push your order list to your PMS



ALTO* integrates **Portfolio Design** to meet the specific needs of portfolio managers seeking innovation and robustness in designing their portfolios. It completes a wide range of functionalities for portfolio managers. This **scalable** module enables the client to **experiment**, **validate** and **deploy** its own portfolio construction chain.

ALTO* Portfolio Design relies on an **open architecture** and a **generic data model**, both designed to integrate any portfolio management process. These two features provide an **evolving and flexible solution** to improve continuous deliveries by allowing modifications, loading new optimization libraries or even adding new languages. The Excel and VBA tools are replaced by an **industrialized web-based UI and Python** which can integrate **shareable data** into its process and deliver **valuable insights** through customized dashboards.

ALTO* Portfolio Design is also available as **stand-alone solution** depending on the client set-up and requirements.



Main advantages

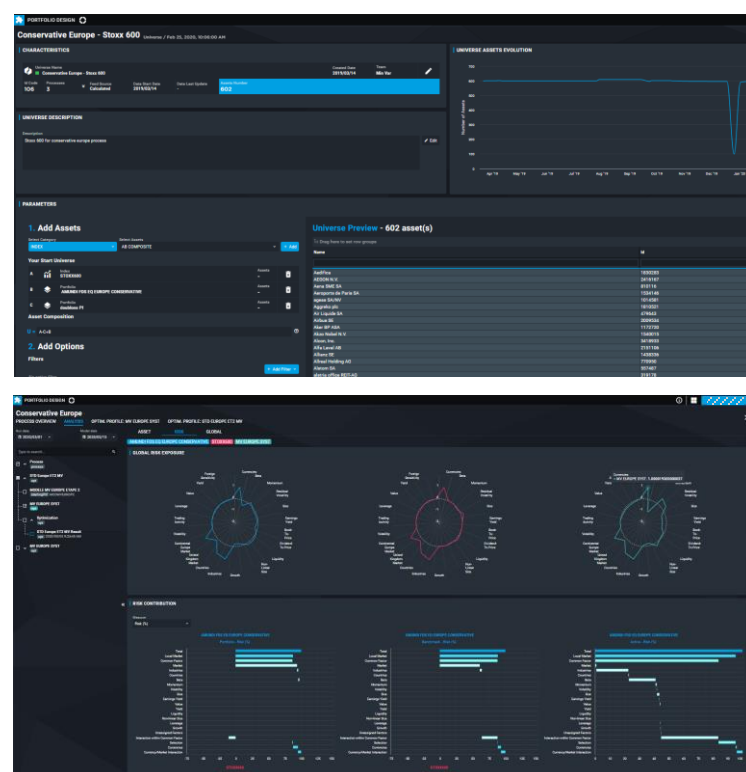
- Normalize the management process
- Stand-alone service, open to all PMS
- Fast and scalable optimization calculation
- Integration of any type of metrics
- Automation of any risk/optimization engines
- Elaboration of tailor-made analysis views
- Portfolio management process as building blocks, shareability across desks

ALTO* Portfolio Management System

ALTO* is Amundi's Portfolio Management System (PMS) covering the entire Asset Management value chain and providing a 360° portfolio view for all asset classes. Amundi Services offers outsourced solutions for technology & operations and makes the ALTO* platform available to external asset managers and institutional investors.

ALTO* users can, for example, analyze and manage portfolios, simulate the impact of orders, make investment decisions, perform middle office operations, measure performance, monitor exposures and risks.

ALTO* Portfolio Design is a dedicated web module for portfolio construction.



*Amundi Leading Technologies & Operations